



# 2020 Finn World Masters

## Port Zélande, The Netherlands

### 29 May - 5 June 2020

#### NOTICE OF RACE

#### **1 Organizing Authority and Venue**

- 1.1 The 2020 Finn World Masters will be held from 29 May to 5 June 2020 in Port Zélande, The Netherlands.
- 1.2 The Organizing Authority is the Finn Club Holland in conjunction with the International Finn Masters Committee (IFMC).

#### **2 Rules**

- 2.1 The regatta will be governed by the rules as defined in the Racing Rules of Sailing (RRS) and the Finn Masters Rules and Event Manual. These may be changed, where permitted, by the Sailing Instructions with the approval of the IFMC.
- 2.2 Appendix P "Special Procedures for Rule 42" will apply but is changed as follows; P2.3 will not apply and P2.2 applies to the second and subsequent penalties. In accordance with Class Rule A.6.2, the recommended wind speed for Class Rule C1.1 (2) is 12 knots.
- 2.3 The maximum recommended wind speed across the racing area is 20 knots and the minimum is 5 knots. The decision to start a race or abandon a race rests with the Race Committee.
- 2.4 -
- 2.5 The prescriptions of the RNYU will apply (see: <http://www.sailing.org/41717.php>).
- 2.6 If there is a conflict between languages, the English text will take precedence.
- 2.7 Boats may be required to display advertising chosen and supplied by the Organizing Authority. Such advertising, if any, shall be displayed in accordance with the Sailing Instructions.
- 2.8 All competitors will be required to wear an adequate personal floatation device at all times while afloat, except briefly while changing or adjusting clothing or personal equipment.
- 2.9 Coach and support boat restrictions may be applied. These will be published in or with the Sailing Instructions.

#### **3 Eligibility and Entry**

- 3.1 Eligible competitors shall be current members of an IFA recognized National Finn Association. They shall complete on-site registration according to the Event Schedule, unless the Organizing Authority extends this date.
- 3.2 The regatta is open to Finn Class sailors born in 1980 or before.
- 3.3 Entries will be accepted in the following categories, with age determined as the age at the birthday in the year of the event:
  - a World Master (the overall winner)
  - b Master (winner 40-49 years old)
  - c Grand Master (winner 50-59)
  - d Grand Grand Master (winner 60-69)
  - e Legend (winner 70-80)
  - f Super Legend (80+)
  - g Ladies
  - h Classic Boat (Built prior to 1985)



- 3.4 Entries shall be submitted online at <https://www.fwm2020.com> prior to April 15, 2020, unless extended by the Organizing Authority. The entry form is available through <https://www.fwm2020.com>. Entries received after this deadline will only be accepted with the Organizing Committee authorization. In any circumstance, entries received after May 31, 2020, 12:00 hrs local time will not be accepted.
- 3.5 The Entry Fee is EUR 295.00 and shall be paid in full by April 15, 2020 as detailed on the entry form. This includes a fee of EUR 40.00, which the OA shall forward to the Finn Masters Account. Entries received after April 15, 2020 will be accepted with a 50% surcharge (EUR 442.50). Entries received after May 29, 2020 will be accepted with a 100% surcharge (EUR 590.00). Entries received after May 31, 2020, 12:00 hrs local time will not be accepted.
- 3.5.1 Completing an entry or registration form will be considered a contractual obligation to the pay the entry fee, subject to reasonable cancellation or as detailed in 3.6. After completing and sending the Entry Form the competitor agrees to pay the Entry Fee as defined in this Notice of Race. No shows without notification or late cancellation will be expected to pay before any entry will be accepted at International Masters Championships in future years. Reminders to pay may not be sent.
- 3.6 Cancellation Policy  
Entries may be reimbursed according to the following penalty options:
- Cancellation request received before April 15, 2020: 100% reimbursement.
  - Cancellation request received between April 15, 2020 and May 15, 2020: 50% reimbursement.
  - Cancellation request received after May 15, 2020: 0% reimbursement
  -
- 3.7 An entry is not complete until any entry fees have been paid, the entry has been accepted by the Organizing Authority and registration has been completed.
- 3.8 Entries will officially be accepted once registration has been completed with the Organizing Authority approval.
- 3.9 A valid measurement certificate for the boat entered shall be presented or its existence verified at onsite registration in accordance with RRS 78.2. Certificates can be pre-registered prior to the measurement schedule. Details to follow.
- 3.10 Coach and support boats will be required to register, be insured and comply with local regulations to be permitted to use launching and berthing at the venue. Registration may be completed online through the event website (<https://www.fwm2020.com>). Payment of the fee of EUR 100.00 is required at the Information Office before the start of the Event. Registered boats will have the possibility to use the crane according to the harbour timetable, an assigned mooring, and 1-person dinner ticket.
- 4 Competition Format**
- 4.1 Eight (8) races are scheduled. The Race Committee in conjunction with the IFMC may decide to divide the fleet series into groups. The method of division will ensure groups of approximately equal size and ability and will be detailed in the Sailing Instructions.
- 4.2 This format may be changed with the approval of the IFMC and will be specified in the Sailing Instructions.



## 5 Event Schedule

- 5.1 The event schedule may be changed with the approval of the IFMC and will be specified in the Sailing Instructions; however, the days allocated for racing will not be changed.

Date	Event	Time	Location/remarks
Friday, 29 May	Measurement	09:00-18:00	Inspection Area
	Registration	09:00-18:00	Race Office
Saturday, 30 May	Measurement	09:00-18:00	Inspection Area
	Registration	09:00-18:00	Race Office
Sunday, 31 May	Measurement/Registration	09:00-16:00	Inspection Area
	Competitor's Meeting	12:00	TBA
	Practice Race (1 race scheduled)	14:00	
	Opening Ceremony	19:00	TBA
Monday, 1 June	Racing (2 races scheduled) First Warning Signal	12:00	
Tuesday, 2 June	Racing (2 races scheduled) First Warning Signal	12:00	
Wednesday, 3 June	Annual Masters Meeting Racing (1 race scheduled) First Warning Signal Official Dinner	10:00 - 14:00	Event Village  TBA
Thursday, 4 June	Racing (2 races scheduled) First Warning Signal	12:00	
Friday, 5 June	Racing (1 race scheduled) Closing Ceremony & Prize giving	12:00 ASAP	Event Village

## 6 Schedule of Races and Attendance at Ceremonies

- 6.1 One or two races are scheduled for each day of racing. A maximum of two races per day will be sailed, unless extended to three races with the approval of the IFMC, and then only in order to complete a valid championship.
- 6.2 Succeeding races will be started as soon as practicable after the finish of the previous races.
- 6.3 No warning signal will be made after 15:00 hours on Friday, June 5, 2020.
- 6.4 All participants are requested by the International Finn Class and the Organizing Authority to attend the Opening and Closing Ceremonies.
- 6.5 Out of respect for the organizing committee, the volunteers and the other competitors, prizes can only be collected in person. Prizes not collected in person will remain the property of the organizing committee.

## 7 Measurement

- 7.1 All boats shall undergo measurement of hulls, spars and sails as well as equipment checks according to the Finn Class World Masters Rules, unless otherwise decided by the Equipment Inspection Committee. Inspections will take place according to the Event Schedule. All measured equipment will be identified for the Championship. Only identified equipment may be used during the Championship.
- 7.2. A maximum of 2 masts and 2 sails shall be used during the Championship. Only certified sails shall be presented. There will be no provision for uncertified sails to be measured at the event.



- 7.3. Measurement and equipment checks may be made throughout the Regatta at the discretion of the Technical Committee, Race Committee or the International Jury.
- 7.4. Measurement will focus on safety issues. Checks will be performed on rudder safety clip (Class Rule, C.8.4.a.1), towing rope (C.5.2.a.1), centerboard elastic (C.8.3.a), mast retaining device (C.9.3.1). Competitors are requested to check safety equipment before travelling to the event.

## **8 Sailing Instructions**

- 8.1. The Sailing Instructions (SI) will be available at on-site registration. A preliminary version may be posted on the event website prior to this date.
- 8.2. In line with the IFA's environmental policy, IFMC and RDYC would appreciate if the documents including the Notice of Race and Sailing Instructions, could be read from electronic devices.
- 8.3. Copies of Sailing Instructions will be available at the Race Office during on-site registration, but only if they are requested.

## **9 Racing Area**

- 9.1. The intended race-course areas will be as shown in Attachment A.

## **10 Courses**

- 10.1. Courses will be either windward/leeward or trapezoid with a target time of 75 minutes and a time limit of 120 minutes.

## **11 Scoring**

- 11.1. Number of races
  - (a) Four races shall be completed to constitute a valid Championship.
  - (b) When fewer than 5 races have been completed, a boat's series score will be the total of her race scores.
  - (c) When 5 or more races have been completed, a boat's series score will be the total of her race scores excluding her worst score.
- 11.2. Spare
- 11.3. The positions of competitors in the Categories (NoR 3.3) will be based on their total score in the overall standing.

## **12 International Jury**

- 12.1. An International Jury will be appointed in accordance with RRS Appendix N and perform the duties listed in RRS N2.
- 12.2. Decisions of the Jury will be final as provided in RRS 70.5.

## **13 Prizes**

- 13.1. Perpetual prizes will be awarded to the overall winner and the winner of each Category.
- 13.2. Prizes will be awarded for the top 10 overall and the top 3 in each Category.
- 13.3. Legends will receive a participation prize from the master's President.



## **14 Insurance**

- 14.1 Each participating boat shall be insured with valid third-party liability insurance with a minimum cover of EUR 1,500,000.00 or the equivalent thereof in any other currency for any one incident. By entering the event each competitor declares that they hold such insurance.

## **15 Support Boats and Personnel**

- 15.1 All support boats (boats with support persons on board as defined by the RRS) shall be registered (see 3.8) with the Organizing Authority and will be required to comply with local legislation and event support boat regulations or sailing instructions. The Organizing Authority may refuse registrations and accept late registrations at their sole discretion.
- 15.2 All support boats shall always clearly display the 3-letter national code of their World Sailing Member National Authority in contrasting colour to the background while afloat. The minimum height for the letters shall be 200 mm and visible from both sides of the boat.
- 15.3 Registered support boats shall act as rescue boats in case of need according to procedures that will be described in the Sailing Instructions. If the Race Committee displays flag V, all support boats shall monitor VHF channel 77 and comply with requests from the Race Committee and any published Safety Procedures.
- 15.4 All support boats shall be equipped with a VHF marine radio operative at the official radio channel that will be published in the Sailing Instructions, the appropriate safety individual buoyancy (lifejackets), and fitted with operative kill cords, which shall be used at all times when afloat. Radio communications procedures will be described in SI.

## **16 Media Consent: Rights to use Names & Likenesses**

- 16.1 Competitors automatically grant the Organizing Authority, the International Finn Association and any party to which they may delegate this right, without payment the right in perpetuity to make, use and show (including via the internet), any motion pictures, still pictures, live, taped or filmed television, or any other form of media, of or relating to the event.
- 16.2 Boats may be required to carry cameras, sound equipment and positioning equipment as specified by the Organizing Authority.
- 16.3 The top three competitors as well as the individual race winners may be required to attend a media press conference each day.
- 16.4 Competitors may be required for interviews at the regatta.

## **17 Disclaimer of Liability**

- 17.1 Competitors participate in the regatta entirely at their own risk. See RRS 4, Decision to Race: *"The responsibility for a boats decision to participate in a race or continue to race is hers alone"*. Sailing is by nature an unpredictable sport and therefore inherently involves an element of risk.
- 17.2 The organizing authority will not accept any liability for material damage, personal injury or death sustained in conjunction with or prior to, during, or after the regatta. Rule 4 of the RRS states: By taking part in the event, each competitor agrees and acknowledges that:
- They are aware of the inherent element of the risk involved in the sport and accept responsibility for the exposure of themselves, their crew and their boat to such inherent risk whilst taking part in the event;
  - They are responsible for the safety of themselves, their crew, their boat and their other property whether afloat or ashore;
  - They accept responsibility for any injury, damage or loss to the extent caused by their own actions or omissions;
  - Their boat is in good order, equipped to sail in the event and they are fit to participate;



- (e) The provisions of a race management team, patrol boats and other officials and volunteers by the race organizer does not relieve them of their own responsibilities;
- (f) The provisions of the patrol boats cover are limited to such assistance, particularly in extreme weather conditions, as can be practically provided in the circumstances;
- (g) The fact that the Race Committee conducts inspection, or not, of a boat does not reduce the responsibilities of each competitor set out in this Notice of Race and Sailing Instructions.

**18 Contact details:**

**Address:** Marina Port Zélande.  
Kabellaarsbank 5.01  
3253 ME Ouddorp

**Phone:** +31 (0)111-671920 (option 1)

**Opening hours:** 09:00 – 17:00 (during working days)

**Mail:** [info@fwm2020.com](mailto:info@fwm2020.com)

**Finn Masters website:** [www.finnworldmasters.com](http://www.finnworldmasters.com)

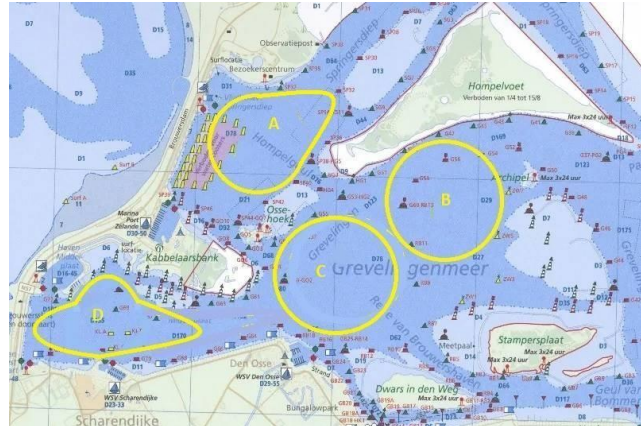
**Event website:** <https://www.fwm2020.com/>





## **ATTACHMENT A**

**Racing Area:**



Only race area's B and C will be used during the Finn World Masters.

## **ATTACHMENT B**

**Harbour Map**

